

World Breastfeeding Trends *initiative* *Tracking, Assessment and Monitoring systems*



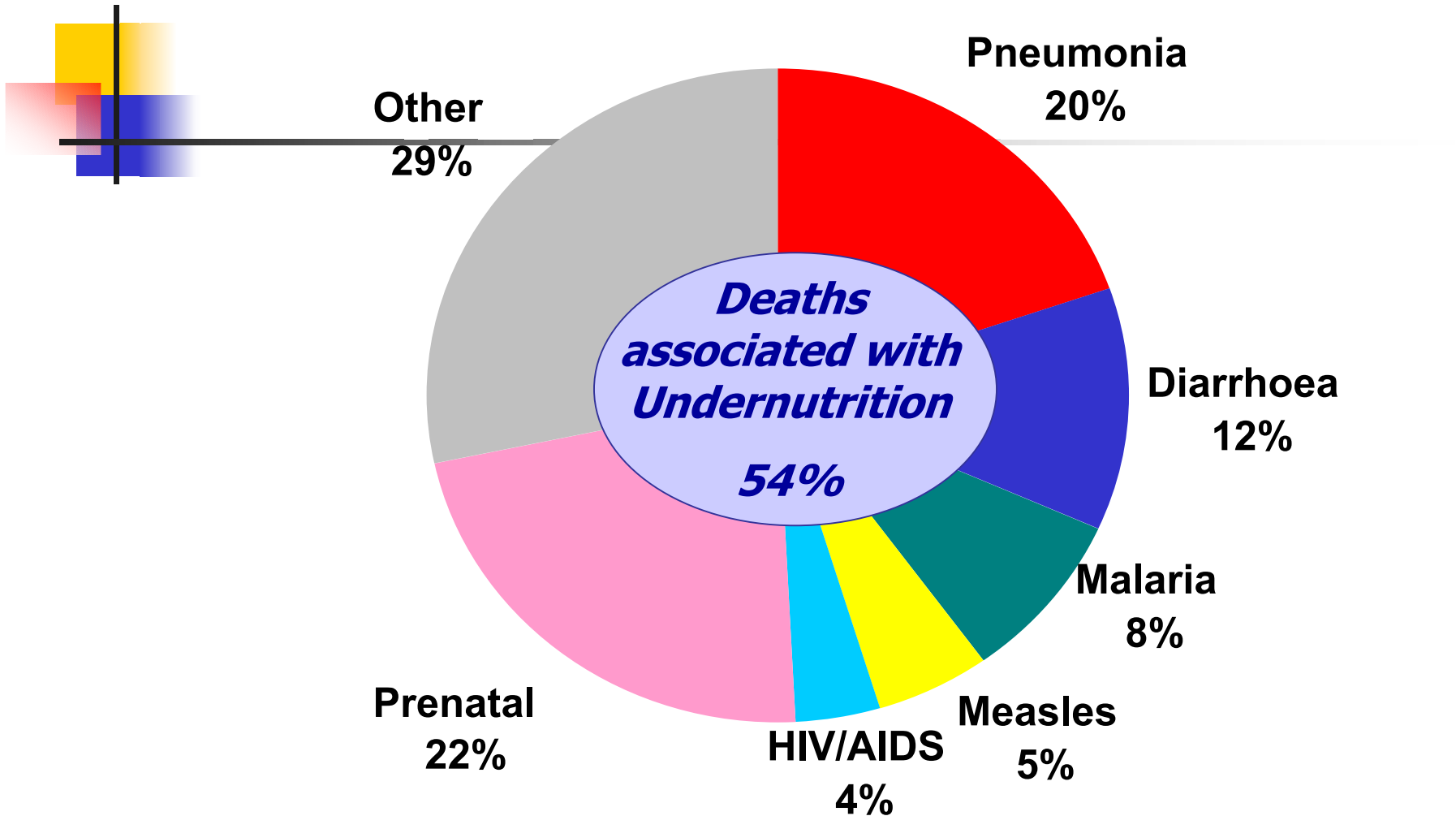
Dr.J.P.Dadhich
Coordinator,
BPNI Taskforce on Research and
Interventions



Outline of the Presentation

- Relevance and History
- World Breastfeeding Trends initiative (WBT*i*)
 - What is WBT*i*
 - What is the scope of WBT*i*
 - How WBT*i* is different from other data base
 - Process of WBT*i* at Regional and National level
- Components of APPAR tool kit@

Major causes of death among children under five, worldwide, 2000, Malnutrition is associated with infant and young child mortality

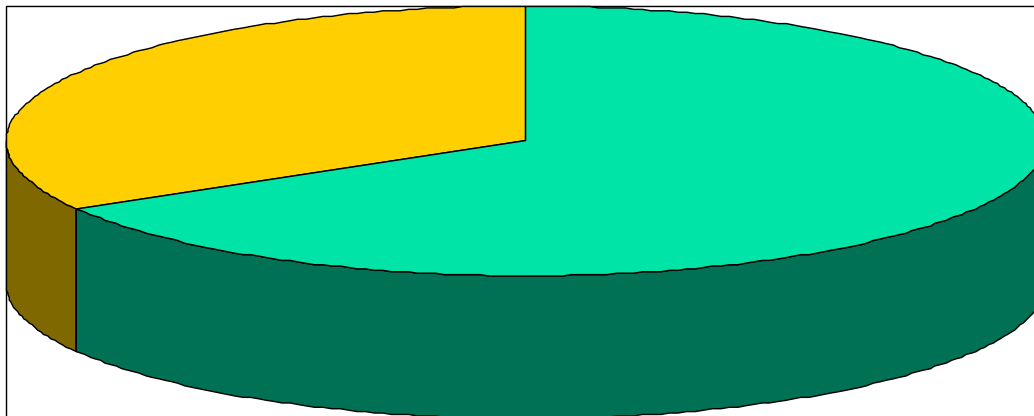


Sources: For cause-specific mortality: EIP/WHO. For Under nutrition: Pelletier DL, et al, *AMJ Public Health* 1993, 83:1130-1133

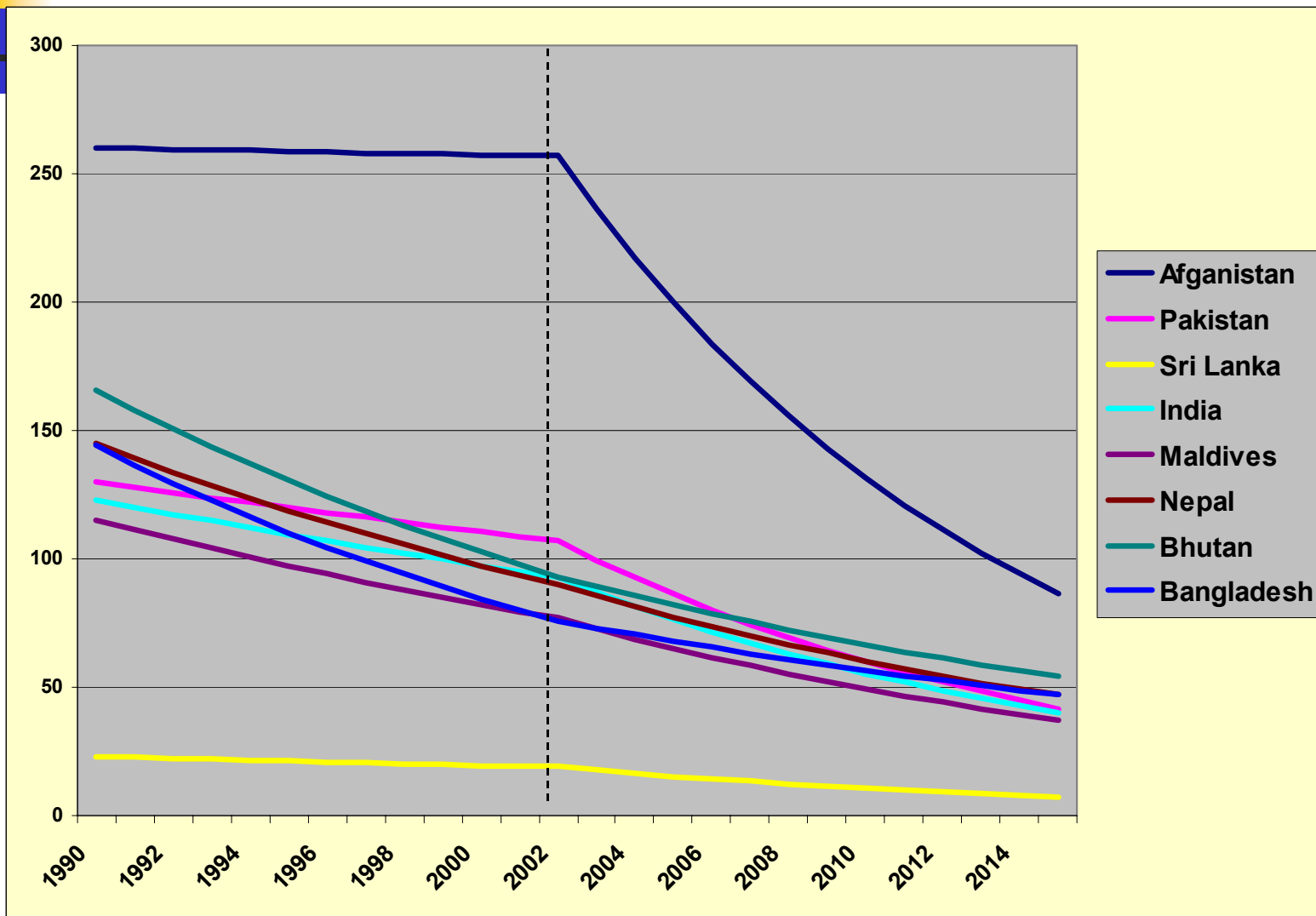
According to the Global Strategy, 2/3rd deaths are related to inappropriate feeding practices

“Malnutrition has been responsible, directly or indirectly, for 60% of the 10.9 million deaths annually among children under five. Well over two-thirds of these deaths, which are often associated with inappropriate feeding practices, occur during the first year of life.....” **Global Strategy for IYCF**

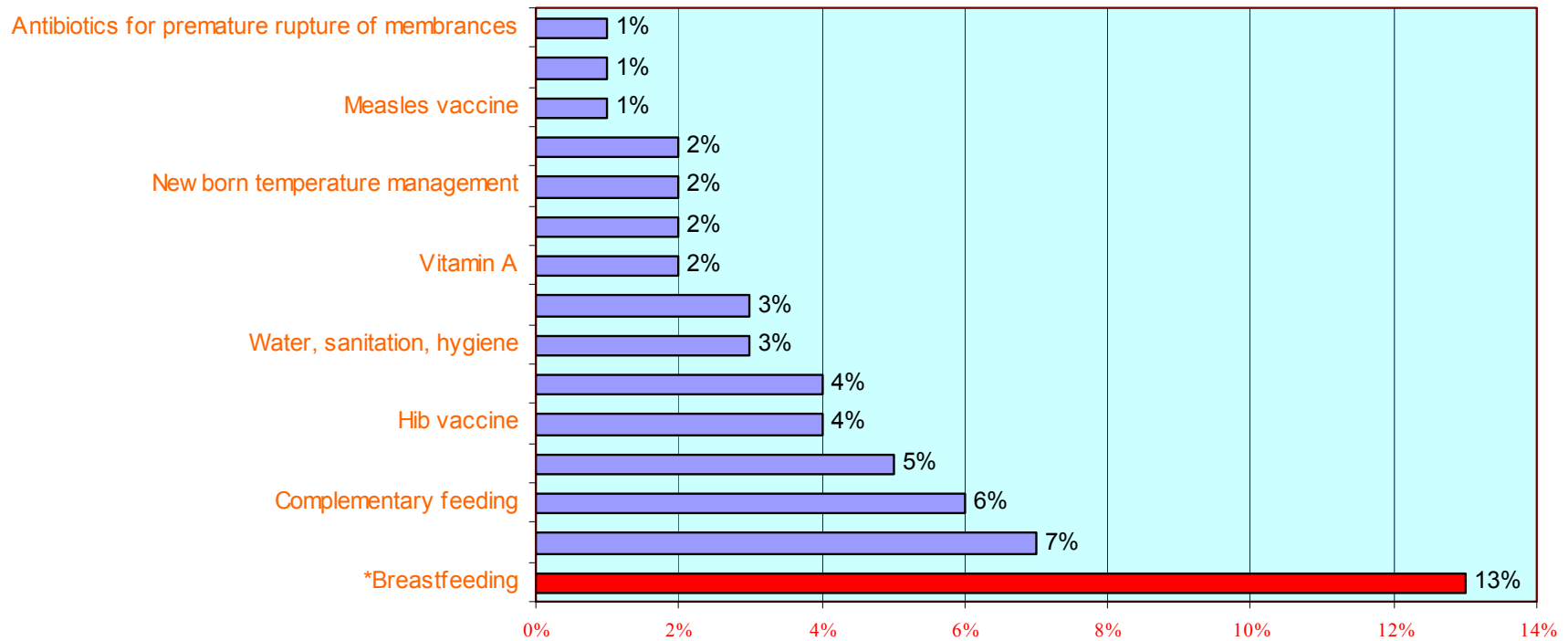
A CASE for tracking



U 5 mortality trends in South Asia and MDGs



Preventive Interventions



LANCET. 362, July 2003



History

- Innocenti Declaration, 1990
- The Global Strategy for Infant and Young Child Feeding, 2002
- The WHA resolutions, latest - 58.32 in May 2005

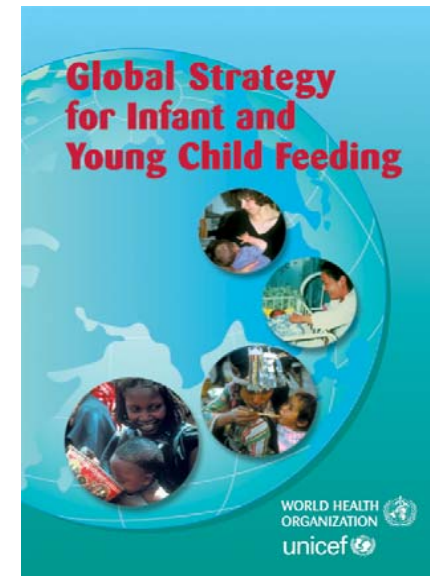


The Innocenti Declaration - 1990

1. Appoint a **national** coordinator with appropriate **authority**
2. Ensure that every facility providing maternity services fully practices all the “**Ten steps to successful breastfeeding**”
3. Give effect to the principles and aim of the **International Code** of Marketing of Breast-milk substitutes
4. Enact legislation protecting **breastfeeding rights of working women**

Additional priority areas recommended in the Global Strategy

- ❖ Develop, implement, monitor and evaluate a comprehensive policy on IYCF
- ❖ Promote exclusive breastfeeding for 6 months and continued breastfeeding up to 2 years or beyond
- ❖ Promote timely and appropriate complementary feeding





Additional priority areas recommended in the Global Strategy

- ❖ Provide guidance on feeding in exceptionally difficult circumstances – HIV, Emergencies
- ❖ Support women's care and nutrition
- ❖ Initiate communications and advocacy for these issues.



unicef 

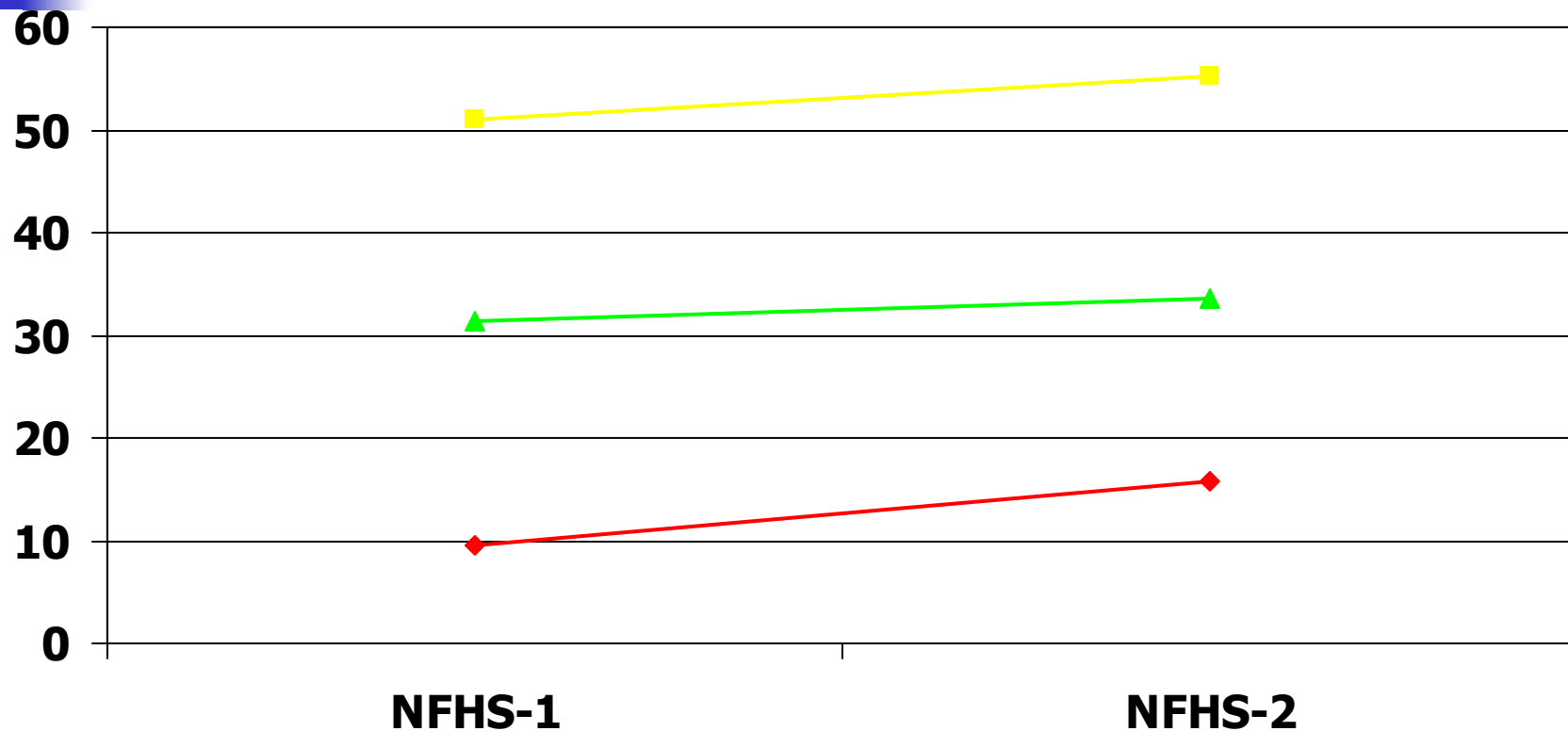
The UNICEF logo, which consists of the word "unicef" in a lowercase, sans-serif font, followed by a circular emblem containing a stylized figure of a mother holding a child.

The WHA resolution 58.32 in 2005

- Reinforces GSIYCF
- To take action and assure resources for plans of action to improve infant and young child feeding practices



India trends in IYCF



◆ Initiation of BF ■ Exclusive BF (0-3 months) ▲ Complementary BF



WHO Assessment tool

Infant and Young Child Feeding: A tool for assessing national practices, policies and program



What is WBTi

- **WBTi** is an extension of GLOPAR which focused on Innocenti declaration
- **WBTi** is a system for **T**racking, **A**ssessing and **M**onitoring the global strategy
- Using a web- based software toolkit, **A**sia **P**acific **P**articipatory **A**ction **R**esearch (APPAR) Toolkit ©



Scope of WBT/

- Encourages the countries to document the status of implementation of the Global Strategy.
- Helps to find out GAPS in existing practice, policy and programs.



Scope of WBT/

- Based on Fifteen indicators, Identified Gaps can be used to develop recommendations and **ADVOCACY** to affect the policy. .
- Helps to prioritize actions for implementing the strategy.
- Ensures ongoing assessments contributing to develop trends.



The process of assessment

Assessment of Gaps

- Coordinator reviews the process
- Identify the assessment team
- Undertake the assessment
 - Workshop for An initial orientation, Agreements and Review of data, Presentation of GAPS



The APPAR Toolkit©

- Fifteen Indicators
- Part I – data on IYCF practices
- Part II - Policy and Programs – subset of Que. based on ID and GSIYCF



The APPAR Toolkit©

Part I

1. Percentage of babies breastfed with in **one hour of birth**
2. Percentage of babies **0<6 months of age exclusively breastfed** in the last 24 hours
3. Babies are breastfed for a **median duration** of how many months?
4. Percentage of breastfed babies less than 6 months old receiving other foods or drink from **bottles**
5. Percentage of breastfed babies receiving **complementary foods at 6-9 months** of age



The APPAR Toolkit©

Part II

Indicator	Content
Indicator 6	National Policy, Program and Coordination
Indicator 7	Baby Friendly Hospital Initiative
Indicator 8	Implementation of the International Code
Indicator 9	Maternity Protection

The APPAR Toolkit©

Part II

Indicator	Content
Indicator 10	Health and Nutrition care
Indicator 11	Community Outreach
Indicator 12	Information Support
Indicator 13	Infant Feeding and HIV
Indicator 14	Infant Feeding During Emergencies
Indicator 15	Monitoring and Evaluation



Next Steps

- Formulating recommendations and presentation
- Use toolkit to enter data on the web
- Identify priority areas for action at national level for feasible actions



Thanks !!!